

# A New York State DOT Super-Slab® Pavement Repair Project

## West Shore Expressway D 260463, Bridge Approaches Staten Island, New York

### Project Particulars

**Owner:** The New York State Department of Transportation

**Traffic Count:** 71,000 ADT

**Work Window:** 8 Hours (for two lanes) at night only

**Type of Contract:** Design, Bid, Build

**Specification:** NYSDOT 704.15

**Type of Repair:** Continuous



The project included repair of both two and three lanes of approach slabs for four bridges. Normal weight concrete slabs were 11-1/2" thick and 9-1/2" thick, separated by an asphalt pressure relief joint. Slabs were of variable length on horizontal and vertical curvature.

### Slab Details

**Slab Dimensions:** 12' Wide (Nom.) X 10' Long (Avg.) X 11-1/2" and 9-1/2" thick.

**Slab Area:** 21,978 SF (2,442 SY)

**No. Slabs:** 190

**Surface Type:** Warped and Planar

### Slab Installation

**Installation Dates:** Winter, 2008–Spring, 2009

**Months of Installation:** 2

**Production Rate:** 8 slabs per night (avg.)



### Project Participants

#### New York State DOT, Region 11; Owner

Ruben Cabrera, EIC; 718-409-6767; rcabrera@dot.state.ny.us

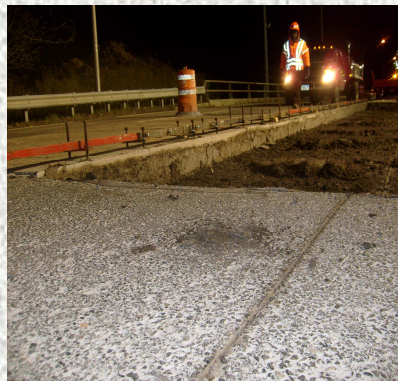
#### Grace Industries, LLC; General contractor

Matt Ganun; 718-762-0200; mganun@graceindustriesllc.com

#### The Fort Miller Co., Inc.; Precaster / Precast System Supplier

Peter Smith, P.E.; 518-695-5000; psmith@fmgroup.com

Michael Quaid, P.E.; 518-695-5000; mquaid@fmgroup.com



**No cure time required before opening slabs to traffic!**



#### The Fort Miller Co., Inc.

P.O. Box 98  
Schuyterville, NY 12871  
Tele. 518-695-5000  
Fax. 518-695-4970  
[www.fortmiller.com](http://www.fortmiller.com)

\*Super-Slab® is protected under at least one of US Patent numbers; (6,607,329), (6,663,315), (6,709,192), (6,899,489), (6,962,462) and (7,004,674) and other U.S. and foreign patents pending. Super-Slab® is a registered US Trademark owned by The Fort Miller Co. Inc.